

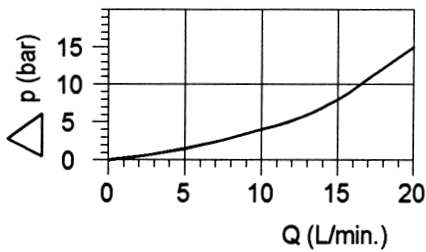
3/2 Wege-Sitzventil NG6 wahlweise stromlos offen oder gesperrt

ISO 4401
CETOP 3

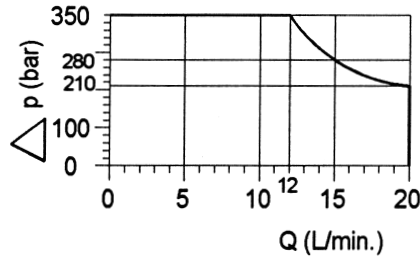
Hydr. Kenngrößen:

p max. = 350 bar, Q max. = 20 L/min.
Hydrauliköl nach DIN 51524

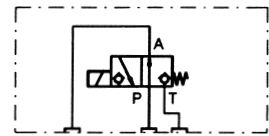
△ p-Q Kennlinie



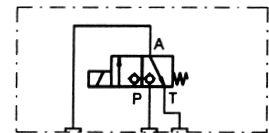
Leistungsgrenze
Volumenstrom druckabhängig



Symbol:



Best.-Nr.: 83 200 00



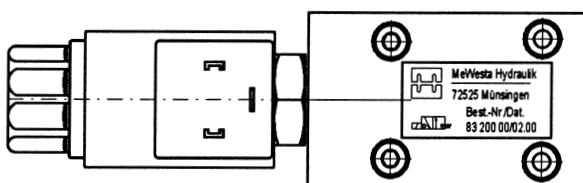
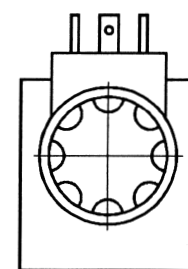
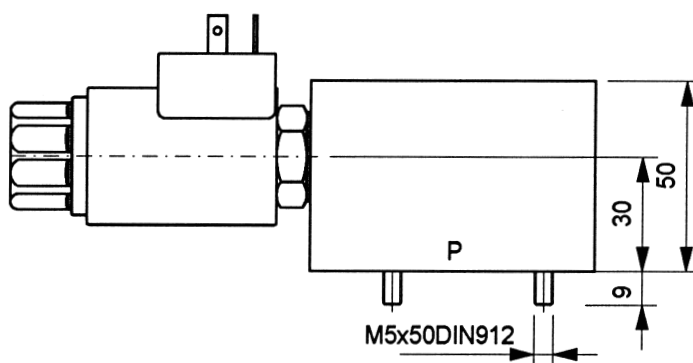
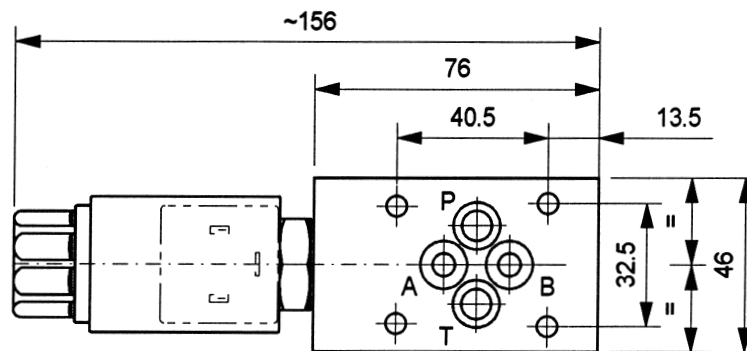
Best.-Nr.: 83 201 00

Elektr. Kenngrößen:

Nennspannung U_N :
24V DC andere auf Anfrage

Nennleistung:
 $P_{20} = 25W$

Einschaltdauer: 100% ED
Schutzart: IP65 nach DIN 40050



Änderungen vorbehalten !



mewesta hydraulik

GmbH & Co.KG
Dottinger Straße 67
Industriegebiet West
72525 Münsingen

Telefon: 0 73 81/93 01-0
Telefax: 0 73 81/93 01-50
e-mail: info@mewesta.de
www: mewesta.de

DIN EN ISO 9001

Stand 05/00

9.1.1