

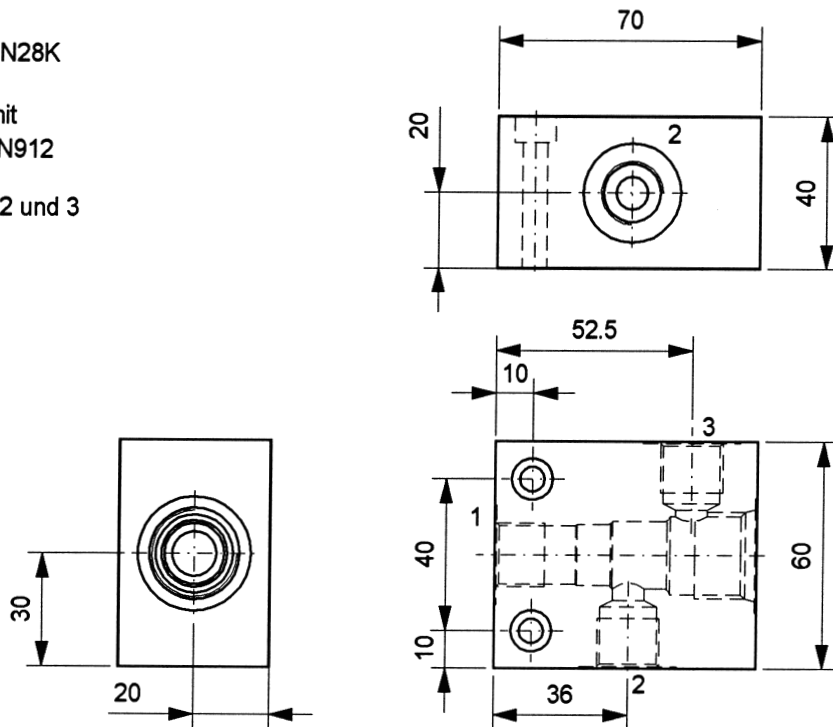
**Technische Daten:**

Material: 9SMN28K

Befestigung mit  
 2x M6X40DIN912

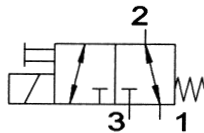
Anschlüsse 1,2 und 3  
 - G3/8"

Ventilgehäuse ohne Ventil gezeichnet

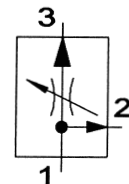


Best.-Nr. ohne Einschraubventil  
**83 127 00**

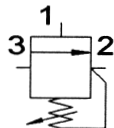
Bestell-Nr.: **83 127 70**  
 3/2 Wegeventil  
 SV1-10-3-0-24DG  
 Nennvolumenstrom 23l/min  
 p max. 210bar



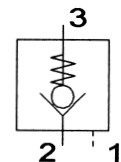
Bestell-Nr.: **83 127 45**  
 3-Wege-Stromregelventil  
 PFR2-10-C-0  
 max. Einlaßstrom 57l/min  
 p min. 14 bar, p max. 210bar



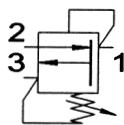
Bestell-Nr.: **83 127 25**  
 Druckfolgeventil  
 PSV3-10-S-0  
 Nennvolumenstrom 23l/min  
 p max. 165bar



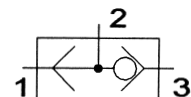
Bestell-Nr.: **83 127 30**  
 entsperr. Rückschlagventil  
 SPC2-10-P-0-25  
 Nennvolumenstrom 23l/min  
 p max. 210bar



Bestell-Nr.: **83 127 20**  
 Druckregelventil  
 PRV2-10-C-0  
 Nennvolumenstrom 45l/min  
 p max. 210bar



Bestell-Nr.: **83 127 31**  
 Wechselventil  
 DSV1-10-B-0  
 Nennvolumenstrom 23l/min  
 p max. 210bar



Änderungen vorbehalten !



**mewesta hydraulik**

GmbH & Co.KG  
 Dottinger Straße 67  
 Industriegebiet West  
 72525 Münsingen

Telefon: 0 73 81/93 01-0  
 Telefax: 0 73 81/93 01-50  
 e-mail: info@mewesta.de  
 www: mewesta.de

DIN EN ISO 9001

Stand 05/00

**9.1.4**